

# KINGS COUNTY SHELTER REPLACEMENT

November 16, 2021

# KINGS COUNTY HOMELESSNESS COLLABORATIVE (KCHC)

- The KCHC is a group of key community stakeholders from various entities such as government agencies and departments, elected officials, housing and service providers, and non-profits working in a coordinated effort to respond to Kings County Homelessness.
- <https://www.countyofkings.com/departments/outside-agencies/kings-county-homelessness-collaborative>
- **Top Priorities:**
  - Increase Community Awareness and Collaboration;
  - **Establish a low barrier shelter;** and
  - Increase Permanent Housing stock.
- KCHC Meets – 3<sup>rd</sup> Monday of every Month at 1:30 PM – Public meetings; recently have been on Zoom/Webex
  - Next meeting is **December 20<sup>th</sup>**
  - Chair Sanja Bugay, Kings County Human Services Agency Director – [Sanja.Bugay@co.kings.ca.us](mailto:Sanja.Bugay@co.kings.ca.us) (559-852-2200)
  - Vice Chair – Jeff Garner, KCAO Director – [jgarner@kcao.org](mailto:jgarner@kcao.org) (559-415-7202)

# KINGS COUNTY HOMELESSNESS COLLABORATIVE (KCHC)

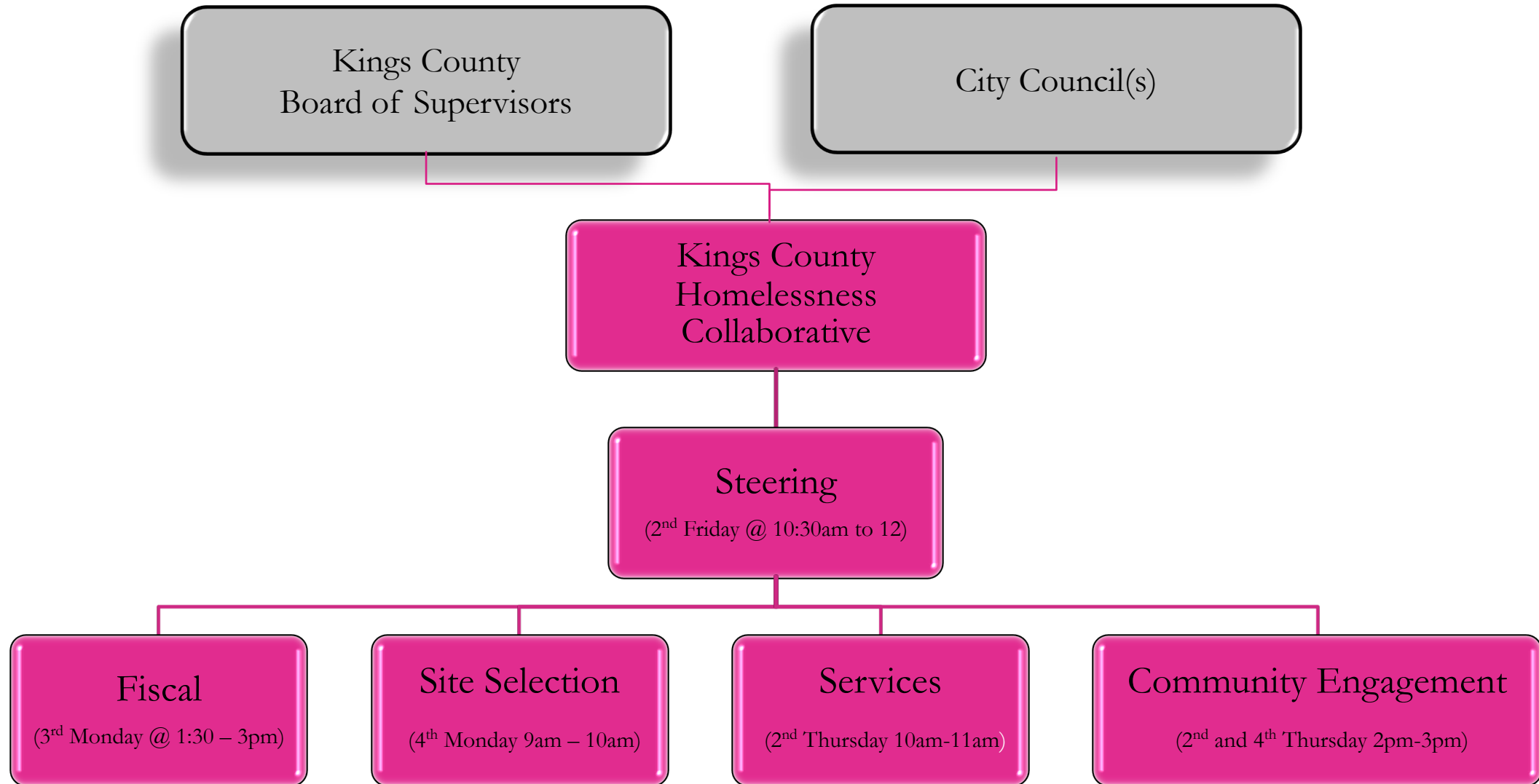
- KCHC Meetings are posted on the Kings County Website:
  - Community Link, Calendar of Events: <https://www.countyofkings.com/community/calendar-of-events>
  - Community Link: <https://www.countyofkings.com/departments/outside-agencies/kings-county-homelessness-collaborative>
  - Agendas contain the Zoom Link for Meetings!
- Agenda / Zoom Link contact: Lisanne Carrillo (559-852-4877) or via email [Lisanne.Carrillo@co.kings.ca.us](mailto:Lisanne.Carrillo@co.kings.ca.us)

# KINGS COUNTY HOMELESSNESS COLLABORATIVE (KCHC)

## ■ Membership:

1. Sanja Bugay, Kings County Human Services Agency
2. Jeff Garner, Kings Community Action Organization
3. Nathan Olson, City of Lemoore
4. Sandra Jackson Bobo, Kings County Housing Authority
5. Dr. Lisa Lewis, Kings County Behavioral Health
6. Vacant, Kings County Public Health
7. Joe Neves, Kings County Board of Supervisors
8. Parker Sever, City of Hanford
9. Robert Thayer, Kings County Sheriff's Office
10. Angie Dow, Kings County Area Public Transit Agency
11. Jacob Sanchez, Community Partner
12. Lavena Najera, Kings County Office of Education
13. Michael Day, Lived Experience Representative
14. Miguel Perez, Kings Tulare Homeless Alliance
15. Valeria Alvarez, Adventist Health Hospital
16. Jeanette Tackett, Local Business Association representative

# SHELTER REPLACEMENT PROJECT WORK



TO JOIN ANY WORKGROUP, CONTACT BRANDON MORENO @ (852-2232) \* BRANDON.MORENO@KINGS.CA.US

# CURRENT EFFORTS UNDERWAY

## Shelter

## Permanent Housing

## Services

<p>KCAO Domestic Violence Shelter</p> <ul style="list-style-type: none"> <li>• 14 Room / 38 bed capacity</li> </ul>	<p>Project Homekey - Purchase and Conversion of Stardust Motel into Sunrise Apartments</p> <ul style="list-style-type: none"> <li>• 22 new studio apartment building</li> </ul>	<p>Case Management / Assessment of Needs and referrals to various supportive services</p>
<p>Kings Gospel Mission</p> <ul style="list-style-type: none"> <li>• 19 bed congregate shelter</li> </ul>	<p>Project Homekey - Triangle Courtyard</p> <ul style="list-style-type: none"> <li>• 24 Manufactured Home Development</li> <li>• Estimated Jan 2022 move In</li> </ul>	<p>Housing Navigation and Housing Subsidies/Vouchers</p>
<p>Project Roomkey - Sheltering COVID Positive or Homeless Vulnerable Individuals out of two Motels. <b>Dependent on FEMA \$ ~ April 2022</b></p> <ul style="list-style-type: none"> <li>• capacity 65 Rooms</li> <li>• sheltering an average of 88 people/month</li> </ul>	<p><b>Need</b> - Landlords willing to rent to homeless population</p>	<p>Mental Health, Substance Abuse and Health Referrals and Services</p> <p>Other as needed: SSI Advocacy, Victim Witness, IHSS Services, Assistance in obtaining documentation (DVM, IDs)</p>
<p>Motel Vouchers <b>Funding Dependent-Risk</b></p> <ul style="list-style-type: none"> <li>• HSA shelters an average of 52 families per month in various motels across the county</li> </ul>	<p><b>Need</b> - Additional Affordable Housing stock (apartments, manufactured homes, single family homes)</p>	<p>Employment Services Assistance (training, job search, resumes, etc.)</p>
<p><b>Need - Project Roomkey Replacement / Low Barrier Shelter</b></p>	<p><b>Need</b> - developers to rehab or bring in new housing stock</p>	<p><b>Need</b> - Centralized Space for provision of homeless services</p>



# PROJECT ROOMKEY FAQ

- Administered through Kings County Human Services Agency
- Non Congregate Shelter for Homeless COVID-19 Positive, COVID-19 Exposed or Vulnerable Individuals
- Time Limited, Emergency Based and short term funded
- **Project closure estimated June 2022** - Federal funding ends April 1, 2022
- Located at 2 Motels (Holiday Lodge and Stardust) for a total of 65 rooms
- Sheltering an average of 88 per day; average stay is 78 days.
- Sheltered 299 individuals to date; 22% were COVID Positive
- **Sheltering basic service:** Individual room and restroom; laundry services; three meals per day; security; access to on-site staff for immediate needs.
- **Optional services:** Enrollment into Whole Person Care Program that provides: intensive case management, housing navigation; mental health services; SUD; SSI advocacy; employment services; life skills classes; connection to other services needed based on individual needs (ie. Primary health care, IHSS, DV services, child welfare, housing subsidies, etc)
- **Other:** Behavioral Health staff on site multiple days per week; hosted COVID19 vaccination and COVID19 testing events; Family Health Care Network scheduled to host mobile primary care services November 18, 2021 exceeded the minimum of 10 scheduled Dr. appointments for the first event. Occurrence (quarterly); working with KPFP on a broader Community Engagement strategy to host events / create recreational group activities for this population.

# PROJECT ROOMKEY IMPACT

- Served as a site to address COVID outbreaks issues in other shelters or congregate settings where individuals released would otherwise be homeless;
- Served as a site to address COVID outbreaks in a few encampments
- Prevented hospitalization of number of individuals due to COVID or other health issues
- Addressed immediate health needs of individuals that otherwise used ER as primary health care setting
- Provided stable environment for chronically homeless individuals to stay without service participation requirements
- Provided ongoing case management and individualized support to homeless individuals who are ready to engage in services

Total served:	274	
Stayed more than 1 Month	172	63%
Whole Person Care enrolled	131	76%
Permanently Housed	39	30%
Referred to Mental Health Services	93	71%
Connected to SSI advocacy:	69	53%
Connected to employment services:	81	62%
Became Employed:	12	10%



# PRK CURRENT EVENTS

- **Thursday, November 18, 2021**, Family Health Care Network is scheduled to host mobile primary care services.
- **Wednesday, November 24, 2021**, between 10 am and 2 pm First Baptist Church will be serving a hearty Thanksgiving meal. That consists of; turkey pot pie, fresh salad, dessert, and drinks.
- **Rapid COVID-19** tests, have been ordered directly from State, to aide in more frequent testing capabilities at PRK.
- **Regular testing** is available **on-site now** for individuals who are symptomatic. Tests are delivered by PRK on-site staff to the Public Health Dept.
- **Transportation** is available for **COVID-19 positive** clients (PPE equipped vehicle on-site)
- **Case Managers transport clients**, in need of support, to initiate engagement and remove barriers.
- **Case Managers** are now **on-site 8 hours per day 5 days a week**, to help built rapport, provide resources, and encourage engagement.



# ACTIVITY REQUESTS FROM CLIENTS

## TOP 5 Activities:

1. Game night: Corn hole, card games, carnival games, and BINGO
2. Bible Study
3. Potlucks/ BBQ nights
4. Music: Karaoke/ live music
5. Gardening

# OTHER SUGGESTED ACTIVITIES BASED ON INPUT FROM CLIENTS AND STAFF

## ■ **Educational:**

- Basic computer classes
- Book club
- Classes on how to use electronics
- Mechanic classes
- Reading/Writing classes

## ■ **Social Activities:**

- Movie night
- Bingo
- Visitation day (family and friends)

## ■ **Physical Activities:**

- Group exercise
- Trips to the park
- Bowling

## ■ **Musical Activities:**

- Live music
- Karaoke

## ■ **Arts and Crafts:**

- Pottery
- Decoration contest
- Crocheting
- Beaded bracelets
- Wood carving

## ■ **Life Skills:**

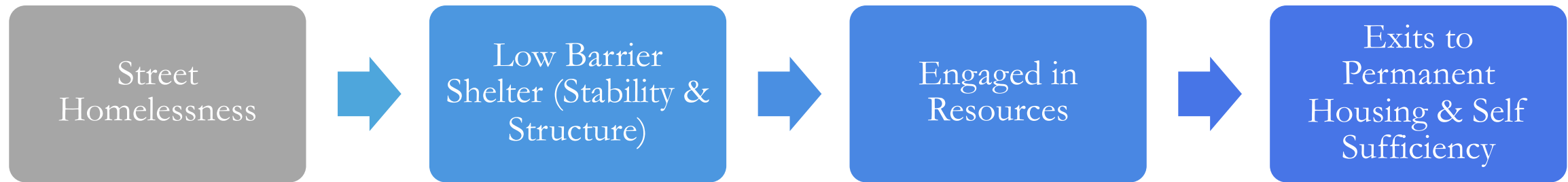
- Pet training
- Anger management classes
- Dog group

## • **Other:**

- BBQ/ Potlucks
- Beauty day (haircut/ pedicure/ manicure)
- Massages
- Gardening
- Food Distribution Event
- Swimming Pool

# WHY A LOW BARRIER SHELTER?

- Low Barrier Shelter – means housing or shelter in which an individual/family who is homeless may live temporarily while waiting to move into permanent housing. Essentially anyone who is homeless can be eligible for shelter services. No requirement of background checks, sobriety, mandatory attendance of workshops/meals/religious services, etc.
- A low barrier shelter provides structure, rules, guidelines, and resources
- Once housed, a shelter provides a place of stability where people can work on self sufficiency (i.e. become an employed taxpayer)
- There is currently no low barrier non-congregate shelter that exists in Kings County



***Although not the solution to homelessness, a Low Barrier Shelter does play a vital role in a person's journey from living unsheltered on the streets, to a temporary placement in a shelter, to self-sufficiency with permanent housing***

# CURRENT NEEDS TO GET A LOW BARRIER SHELTER

- A site / Location for a shelter

- Existing Project Roomkey Location (Holiday Lodge Hotel) will end as soon as Project Roomkey ends.
- Can be a motel, a site with structures (motel, large empty structure) or a site without anything on it, but preferably with utilities

- **Funding**

- Construction funding – est. \$3 Million for 45 beds – will really vary depending on site and type of structure
- Operational funding – est. \$500K per year

- **Scope of Services**

- **Community buy in and engagement**

# LOW BARRIER SHELTER SITE NEEDS

- Estimated half an acre lot that allows for non congregate shelter of 45 rooms
  - Can be a single structure or Space for 45 pallet structures
- Sufficient space for showers / restrooms if not part of each room
- Storage Space for clients and operations
- Separate space for delivery of services that affords confidentiality
- Community Space for group activities
- Proximity to KART, services, grocery stores, primary care providers, employment opportunities, etc
- Zoned for the purposes of sheltering individuals – Commercial Office / Industrial / Multi-Family (O-R, PF, R-M, R-H)

# DEFINING SCOPE OF SERVICE SHELTER SERVICE

*phase*

1

## **Meet the Essentials**

Intake Process  
Monitoring/Security  
Shelter Advocates/Administrators  
Bedding/Bathing  
Snacks/Water  
Storage area/Locker room  
Laundry Services

*phase*

2

## **Night Stay Shelter + Services**

Follows phase I  
One set of clothing  
Daily Navigation Center  
Case management onsite from  
8AM-5PM to provide resources  
and link to agency run programs  
Common area/Recreational area  
Bagged meals

*phase*

3

## **Extended Services**

Includes all services in phase I & II  
Hot meals  
On site case management  
On site housing navigator  
BH Therapist  
PH on site once a week  
SUD counselor  
Weekly Support Groups  
Transportation  
Exit Strategies

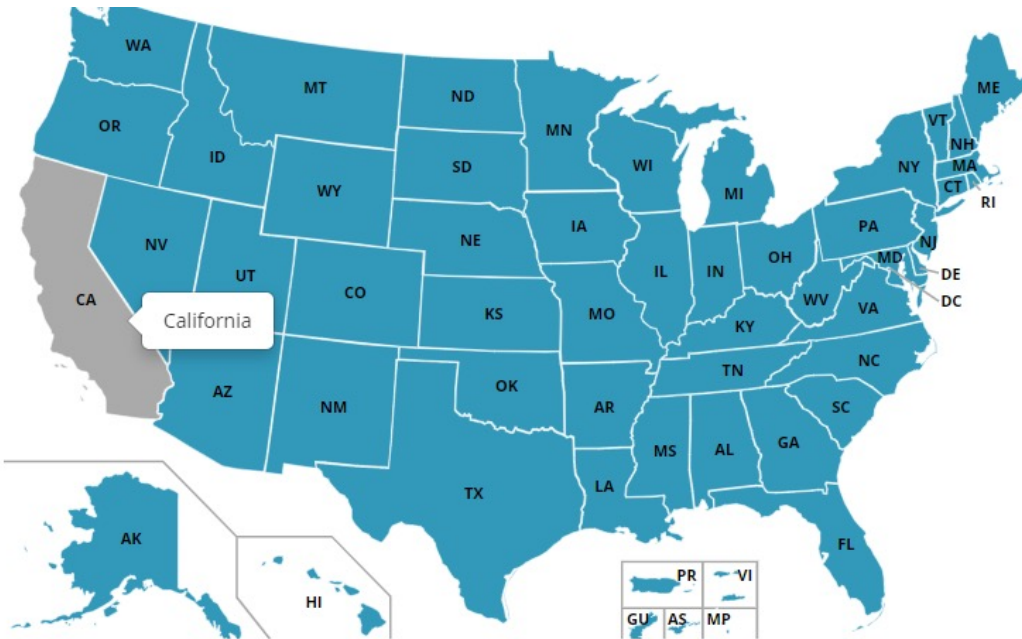
# CONTACTS

- Sanja Bugay, Human Services Agency Director – 559-852-2200 or 559-387-6590 – [Sanja.bugay@co.kings.ca.us](mailto:Sanja.bugay@co.kings.ca.us)
- Esam Abed, HSA Deputy Director – 559-852-4247 - [Esam.Abed@co.kings.ca.us](mailto:Esam.Abed@co.kings.ca.us)
- Brandon Moreno, Program Specialist – 559-852-2232 - [Brandon.Moreno@kings.ca.us](mailto:Brandon.Moreno@kings.ca.us)
- Agenda / Zoom Link contact: Lisanne Carrillo (559-852-4877) [Lisanne.Carrillo@co.kings.ca.us](mailto:Lisanne.Carrillo@co.kings.ca.us)
- Julie LeFils, KPFP, 559-423-0781 – [Julie@kpfp.org](mailto:Julie@kpfp.org)



# HOMELESSNESS IN KINGS COUNTY

The homeless situation in Kings County is a continuously growing problem. Currently Kings County **rank #2 in the nation** for the percentage of unsheltered homeless population compared to counties in the same category: Suburban Continuum of Care Counties. While there have been many efforts in addressing this situation, a unified community approach is needed.



## Kings County 2020 Point in Time Executive Summary

**305 people experiencing homelessness**

111 people are chronically homeless

2011-2020 PIT Count Trend



PIT Count

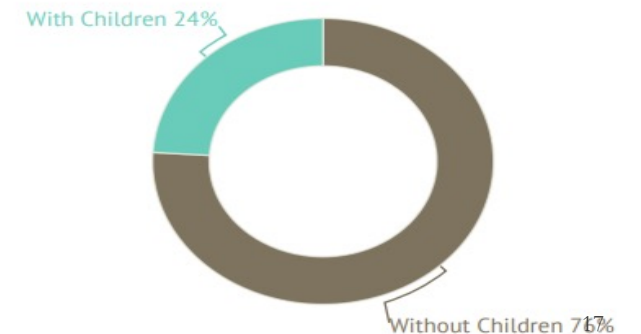
**22%**

Increase since 2019

**66%**

Increase since 2011

Household Composition



# WHO EXPERIENCES HOMELESSNESS?

- Single Adults
- Children and Families
- Veterans
- Chronically Homeless
- Youth and Young Adults

## Kings County

## 2020 Point in Time Executive Summary



269

People slept in an unsheltered location



28

People are veterans



30

People slept in an emergency shelter



95

People have a disability



6

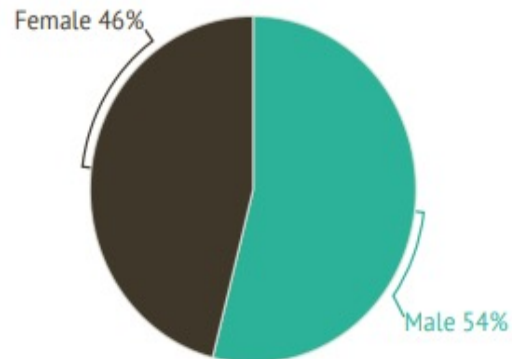
People slept in transitional housing



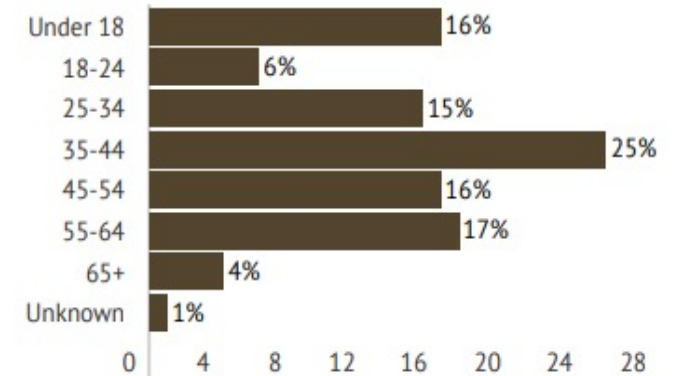
18

Unaccompanied Youth

Gender



Age





QUESTIONS AND  
INPUT

thank you!